

Bolts and nuts play a crucial role in the secure assembly of Profit couplings, mechanical tees, and sprinkler tees, which are essential components in sprinkler installations. These fasteners ensure a strong and reliable connection, maintaining the integrity of the piping system under varying pressures and environmental conditions.

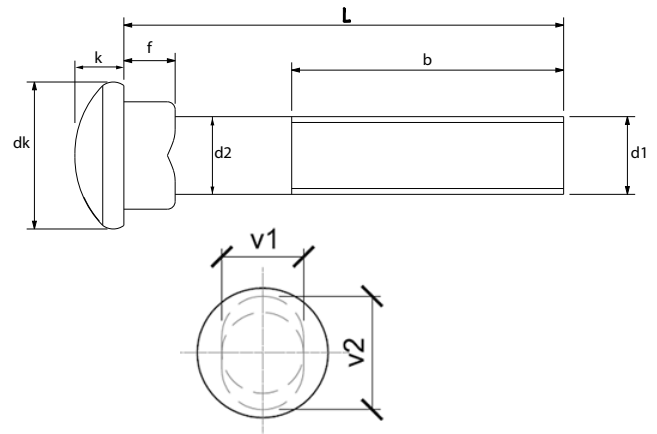
### △ Material specifications

- Material: medium carbon steel
- Protection: zinc electroplated (240 Hrs SST)
- △ Optional: Geomet® 321B coating (720 Hrs SST)
- Heat treatment: quenched and tempered
- Class bolts: 8.8 (ISO 898/1)
- Class nuts: 8 (ISO 898/2)
- Colour: brass yellow

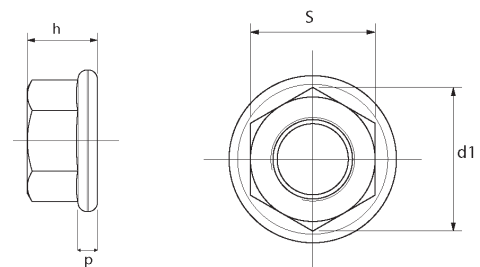


Piping Logistics uses bolts and nuts conform to ASTM A183/ISO 898.

d1 (mm)	M10	M12	M16	M20
d2 (mm)	9	11	15	18
dk (mm)	18	20	26	32
b (mm)	31	41	47	65
f	5	6	8	10
k	7	9	10	12
v1	9	11	15	19
v2	14	16	20	24
L	40,45,50,60	65,70,75	85,90	100,110



d1	M10	M12	M16	M20
p	2	4	5	2.5
h	10	12	15	17
s	15	18	24	30
Torque Nm	44-54	90-100	200-230	270-300



### Installation, maintenance & operating instructions

**Installation procedure for usage of a torque wrench during installation of piping components on construction sites:**

1. Make sure that the coupling houses are located in the pipe grooves and are over the lubricated gasket.
2. Insert bolts and run nuts finger tight.
3. Securely tighten nuts alternately and equally until fully tightened, keeping the gap at the bolt pad evenly spaced.

#### Note

- Uneven tightening of bolts may damage the gasket.
- Lubricant should be applied on the gasket at time of joint assembly.
- On piping installations operating at higher working pressures or within critical locations or environments, the use of a proprietary torque wrench is recommended.

### FITPRO® BOLTS

Fitpro® T-bolts are high quality T-bolts designed to accommodate the requirements for suitable fastening of the fast mechanical Fitpro® coupling.

#### **△ Material specifications**

- Material: medium carbon steel
- Class: grade 9.8
- Heat treatment: quenched and tempered
- Conform to standard ISO 898/1
- Protection: zinc electroplated (240 Hrs SST)
- Optional: Geomet® 321B coating (720 Hrs SST)
- Colour: brass yellow



### FITPRO® NUTS

Fitpro® nuts are high quality heavy hex nuts for suitable fastening of the fast mechanical Fitpro® coupling.

#### **△ Material specifications**

- Material: medium carbon steel
- Class: grade 9
- Heat treatment: quenched and tempered
- Conform to standard ISO 898/2
- Protection: zinc electroplated (240 Hrs SST)
- Optional: Geomet® 321B coating (720 Hrs SST)
- Colour: brass yellow



### FITPRO® R-spacers

Fitpro® R-spacers are indispensable parts to guarantee the function of the fast mechanical Fitpro® coupling.

#### **Material specifications**

- Material: medium carbon steel
- Mechanical properties equal to or exceed class Grade 5
- Protection: zinc electroplated
- Optional: Geomet® 321B coating (720 Hrs SST)
- Colour: brass yellow



### Installation recommendations:

1. Check the dimensions of the grooves before installation
2. Do not remove the bolts & nuts before installation, Fitpro® couplings are installation ready.
3. It is good practice to lubricate the grooves with Profit lubricant.
4. After positioning the coupling onto the grooved pipes tighten the nuts equally and alternating, until the metal pads are closed; respect the maximum torque recommendation table:

Boltsize	Coupling	Torque
<b>M10</b>	1¼", 1½", 2", 2½", 3"	40-50 Nm
<b>M12</b>	4"	100-110 Nm

5. We refer to our separate 'Fitpro® installation datasheet' and 'Fitpro® installation video' on our website.

### GENERAL INFO

- Installers should be trained or experienced to install and understand the product.
- Read and understand all technical datasheets and installation instructions before attempting to install, remove or adjust any Profit piping products.
- Depressurise and drain the sprinkler installation system before attempting to install, remove or adjust any Profit piping products.
- Never work on piping-systems that are pressurised and / or filled with water.
- Profit reserves the right to change specifications, designs and / or standard equipment without notice and without incurring in any obligations.
- Use the necessary Personal Protection Equipment (PPE) to avoid personal injury (helmet, safety shoes and goggles, Profit gloves).



**Failure to follow these instructions could result in death or serious injury and property damage.**

**We advise to always store our products in closed and dry environments, the products do not need any specific maintenance once installed on an aboveground sprinkler installation.**

### REVISION TABLE

Date	△	Notes
02/07/2024	A	Page 1 & 2 - Material specifications are updated.
13/02/2025	B	Page 1 & 2 - Information Geomet® coating added.